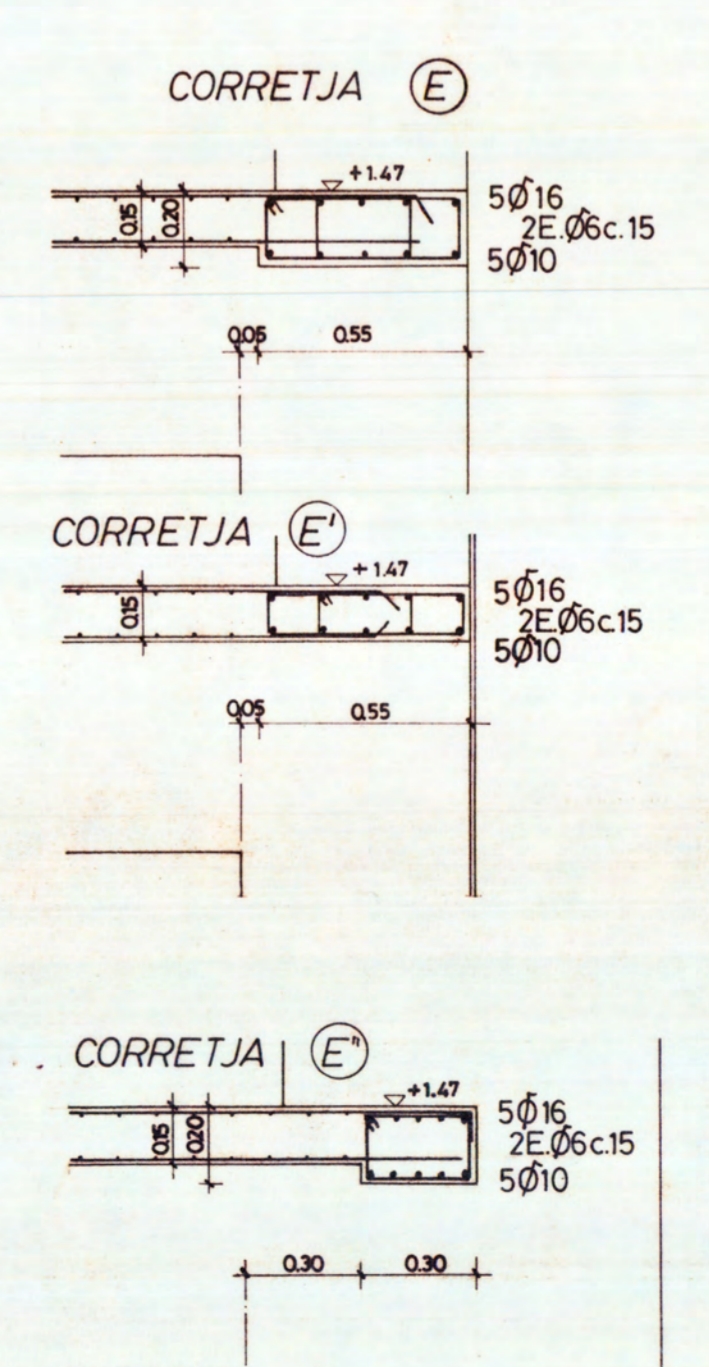
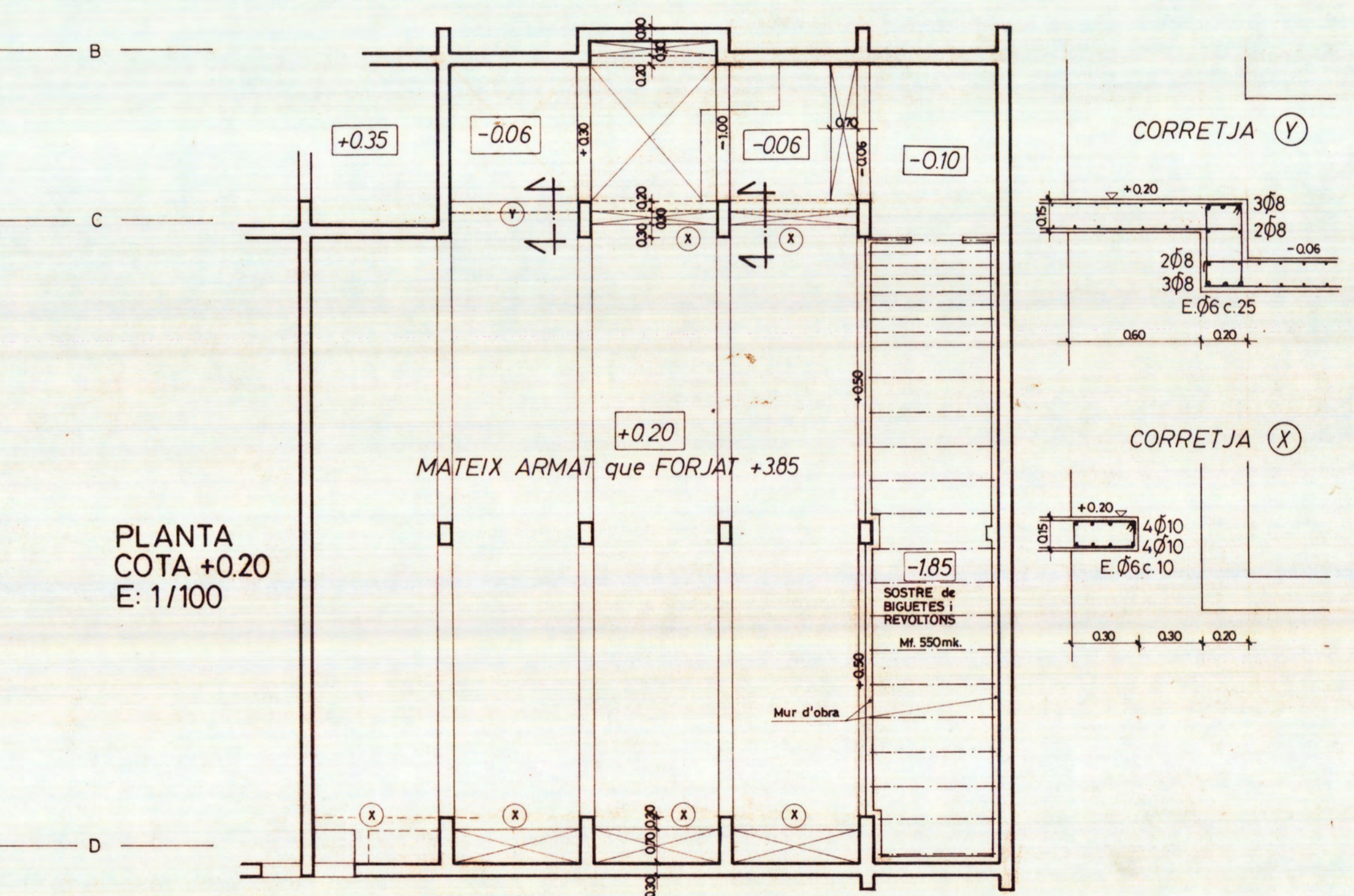
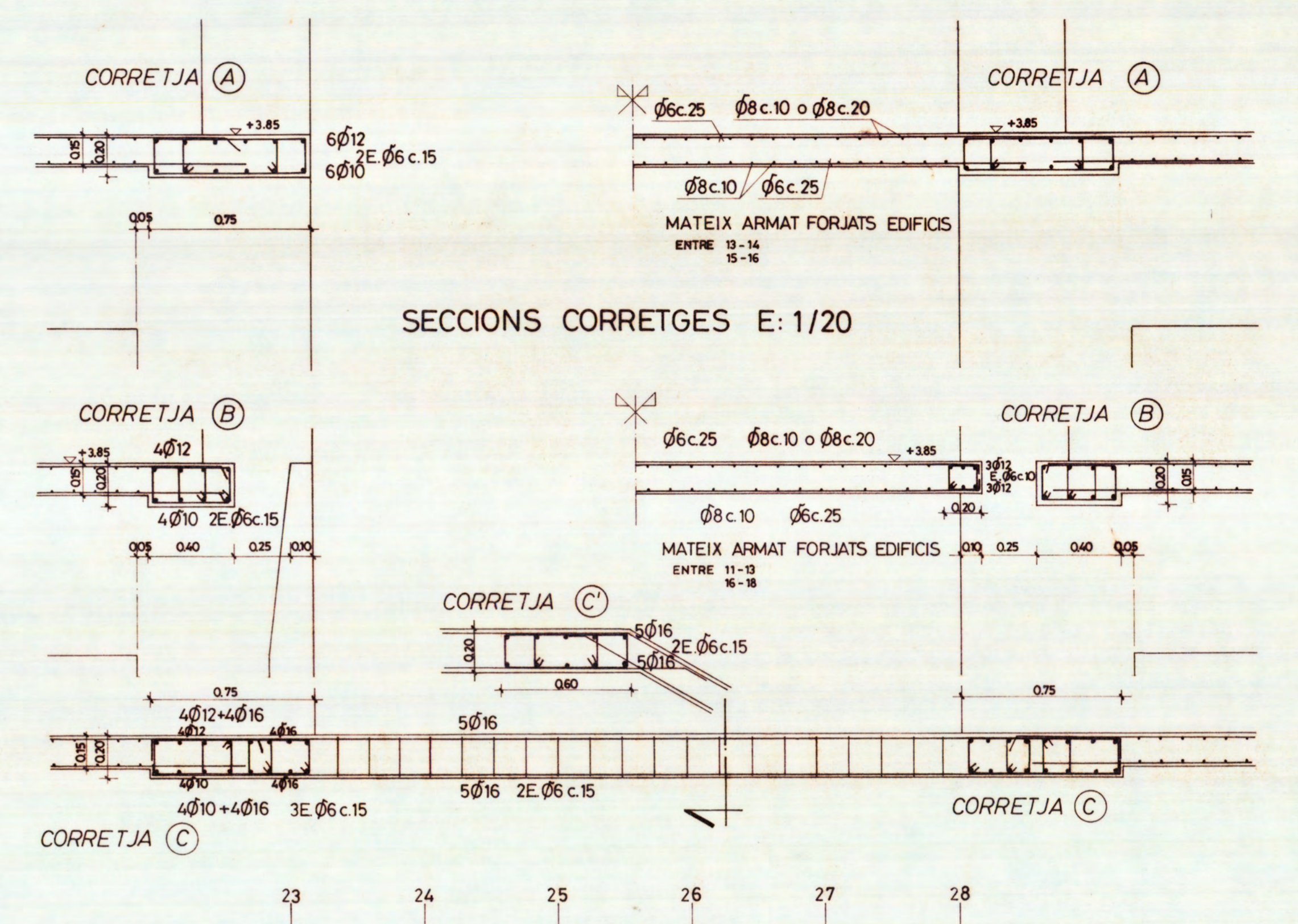
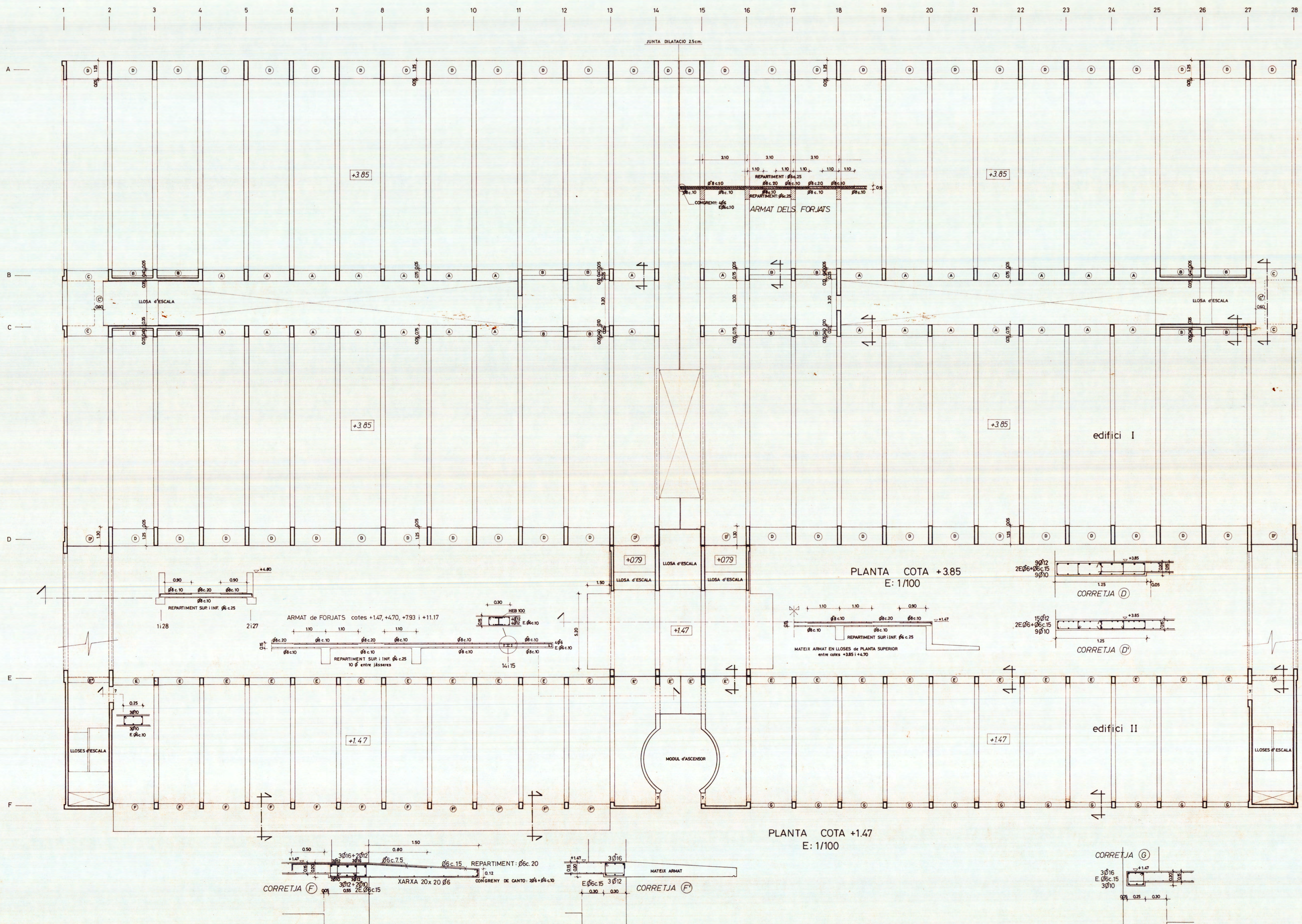


formigó H-200
acer AEH500N

CIMENT P-450
TAMANY MAXIM GRANULAT 20mm
CONSISTENCIA PLASTICA

NIVELL DE CONTROL INTENS
 $f_c = 15$
 $f_t = 1.5$
 $f_s = 1.1$

RECOBRIMENT MINIM ARMADURES 30mm
ENSOLAPAMENT ARMADURES
 $s_1 = 25$
 $s_2 = 25$
 $s_3 = 30$
 $s_4 = 40$
 $s_5 = 75$ cm.
arm sup. arm inf.



PROJECTE BÀSIC I D'EXECUCIÓ

E T S A V

SANT CUGAT DEL VALLÈS

LLUÍS NADAL OLLER Arqte. MARÇ 1989

EDIFICI I : Forjats +0.20 i +3.85

EDIFICI II : Forjat +1.47

E 03

JOAN OVEJERO MORILLA. ESTRUCTURA