

tap F-10

2011-2012

Quadrimestre primavera
Escola Tècnica Superior Arquitectura del Vallès
Universitat Politècnica de Catalunya

Arquitectures

ECOTONS URBANS INTERIORS

DE HUB a Metaparc metropolità

De Sagrera Barcelona al Campus de Torreriibera Santa Coloma de Gramenet

Un parc, una via verda i de mobilitat, Arquitectures d'equipament, carrers transversals,
eixos cívics, vies verdes, places, centres de barri, nous eco barris i peces de ciutat

Professors quadrimestre primavera: Franc Fernández, Carles Llop, Rosa Rull
Professors invitats: Manuel Gausa, Antonio Ravalli, Stéphane Bosc
Col·laboradors arquitectes: Núria Bisbal, Catalina Salvà

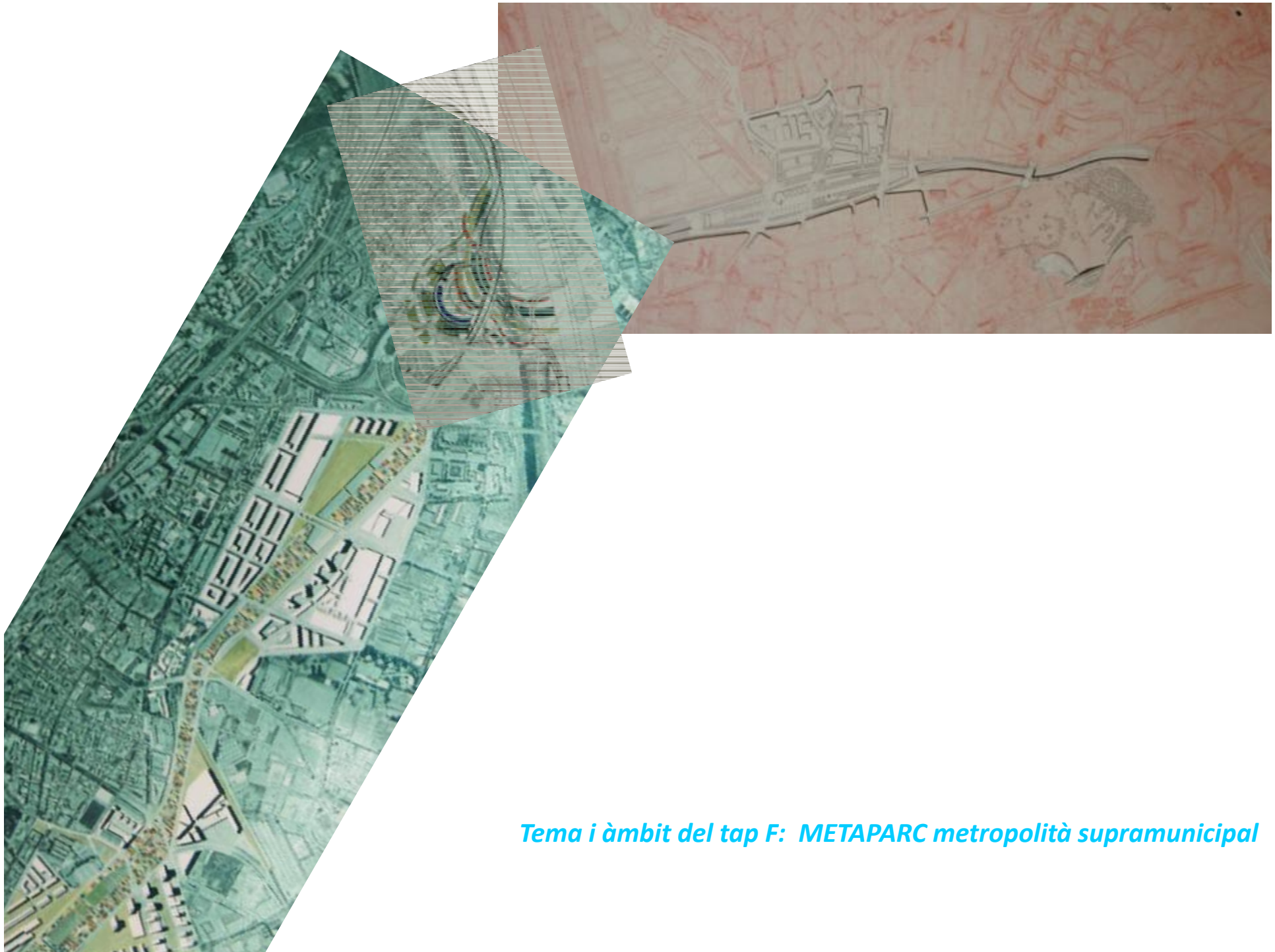
<http://tapf.50webs.com/>



Tema i àmbit del tap F: METAPARC metropolità supramunicipal







Tema i àmbit del tap F: METAPARC metropolità supramunicipal





**SAGRERA BARCELONA_ SANTA COLOMA DE GRAMENET
DE HUB a Metaparc metropolità**



- Un metaparc metropolità
- Una via verda i de mobilitat
- Tramvia
- People mower
- Arquitectures d'equipament
- Carrers transversals
- Eixos cívics
- Vies verdes
- Places
- Centres de barri
- Nous eco barris
- Peces nodes de ciutat

**SAGRERA BARCELONA_ SANTA COLOMA DE GRAMENET
DE HUB a Metaparc metropolità**

FROM HUB TO META-METROPOLITAN PARK

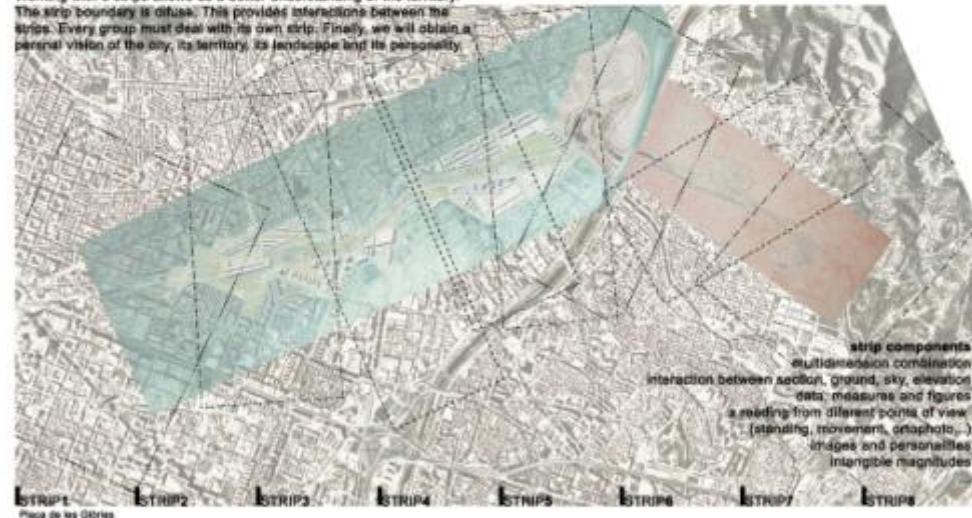
BCN WORKSHOP SAGRERA-TORRIBERA

13th-17th FEBRUARY

<p>10:00 Opening Ceremony Welcome by professor Carles Llop</p> <p>10:30 Opening Lectures New Projects BCN-Santa COLOMA Ricard Fayos</p>	<p>10:30 Lecture 10 strategic projects for Barcelona Vicents Guallart <i>author from ETSAV</i></p>	<p>9:00 Lectures metropolitan cities BCN-Santa COLOMA Tonet Font Jordi Mas Aldayjover Joan Balta</p> <p>12:00 working session</p>	<p>12:00 Workshop Presentations Final Jury Barcelona Sagrera-Santa Coloma: force fields and territory project</p> <p>14:00 Farewell</p>
<p>13th 15:00 Bus Tour Barcelona, metropolitan streets: Avinguda Diagonal, Sagrera, Santa Coloma</p>	<p>14th 16:00 working session</p>	<p>15th 16:00 working session 18:00 Students Presentations Reactions Project Strategies</p>	<p>16th 16:00 working session</p>

THE CITY VIEW FROM 8 STRIPS

Working with 8 strips allows us a better understanding of the territory. The strip boundary is diffuse. This provides interactions between the strips. Every group must deal with its own strip. Finally, we will obtain a personal vision of the city, its territory, its landscape and its personality.



6 KEYWORDS ABOUT SMARTCITIES

These keywords will give the attributes to our city. Developing what they mean will provide us different analytical and programatic strategies.

- smart ECONOMY.....
- smart ENVIRONMENT.....
- smart GOVERNANCE.....
- smart LIVING.....
- smart MOBILITY.....
- smart PEOPLE.....

ESCOLA TÈCNICA SUPERIOR
D'ARQUITECTURA DEL VALLÈS
Franc Ferrández

Carles Llop
Rosa Rull
Núria Estel (Assistant)
Gemma Mirà (Assistant)
Catalina Salvà (Assistant)

UNIVERSITÉ PARIS-EST
MARNE-LA-VALLÉE
Yannick Beltrando
Pierre Alain Trevelo

KARLSRUHE INSTITUTE OF
TECHNOLOGY
Hart Bava



VISUAL AND TIMELINE GUIDE

BCN WORKSHOP SAGRERA-TORRIBERA
13th-17th FEBRUARY

THE URBAN INFLUENCE OF SAGRERA BARCELONA-SANTA COLOMA
map: Barcelona Regional

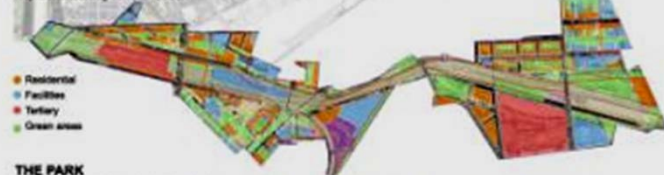


THE STATION
model: TACC



URBAN PLANNING

map: Barcelona Sagrera Alta Velocitat



- Residential
- Facilities
- Tertiary
- Green areas

FUNCTIONAL DIAGRAM

map: Barcelona Sagrera Alta Velocitat



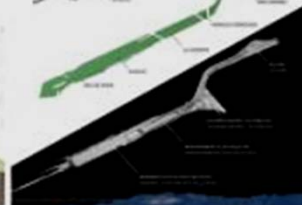
THE PARK

map/section: Adaguer + RCH + Wood 8



RELATIONSHIPS

model: Barcelona Sagrera Alta Velocitat



ACTUAL WORKS
map: Barcelona Sagrera Alta Velocitat



FROM HUB TO META- METROPOLITAN PARK

BCN WORKSHOP SAGRERA-TORRIBERA

13th-17th FEBRUARY

	10:00 Opening Ceremony Wellcome by professor Carles Llop			9:00 Lectures metropolitan cities BCN-STA COLOMA				12:00 Workshop Presentations	
	10:30 Opening Lectures New Projects BCN-Santa COLOMA Ricard Fayos	10:30 Lecture 10 strategic projects for Barcelona Vicente Guallart auditorium ETSAV		Tonet Font Jordi Mas Aldayjover Joan Balta				Final Jury Barcelona Sagrera-Santa Coloma: force fields and territory project	
				12:00 working session				14:00 Farewell	
morning									
afternoon									
february 13 th	15:00 Bus Tour Barcelona, metropolitan streets: Avinguda Diagonal, Sagrera, Santa Coloma	february 14 th	16:00 working session	february 15 th	16:00 working session 18:00 Students Presentations Reactions Project Strategies	february 16 th	16:00 working session	february 17 th	

6 KEYWORDS ABOUT SMARTCITIES

These keywords will give the attributes to our city. Developing what they mean will provide us different analytical and programatic strategies.

smart ECONOMY.....

smart ENVIRONMENT.....

smart GOVERNANCE.....

smart LIVING.....

smart MOBILITY.....

smart PEOPLE.....

ESCOLA TÈCNICA SUPERIOR
D'ARQUITECTURA DEL VALLÈS

Franc Fernández

Carles Llop

Rosa Rull

Núria Bisbal (Assistant)

Gemma Milà (Assistant)

Catalina Salvà (Assistant)

UNIVERSITÉ PARIS-EST

MARNE-LA-VALLÉE

Yannick Beltrando

Pierre Alain Trevelo

KARLSRUHE INSTITUTE OF

TECHNOLOGY

Henri Bava

