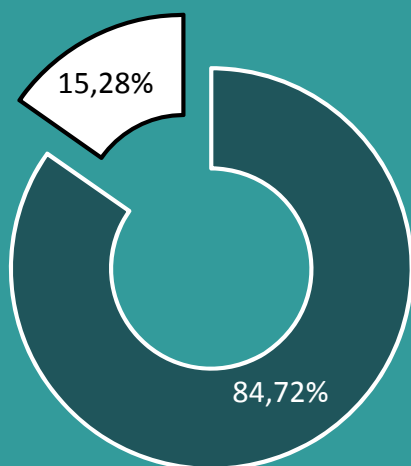
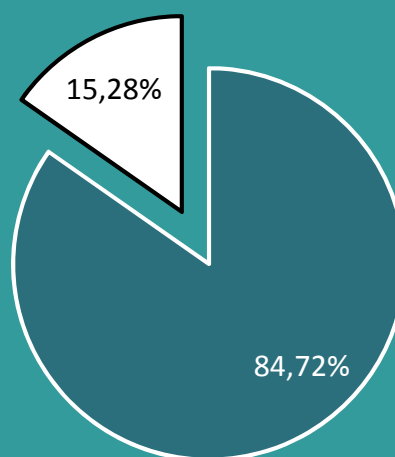


Academic Student Results Fall Semester 2016-2017

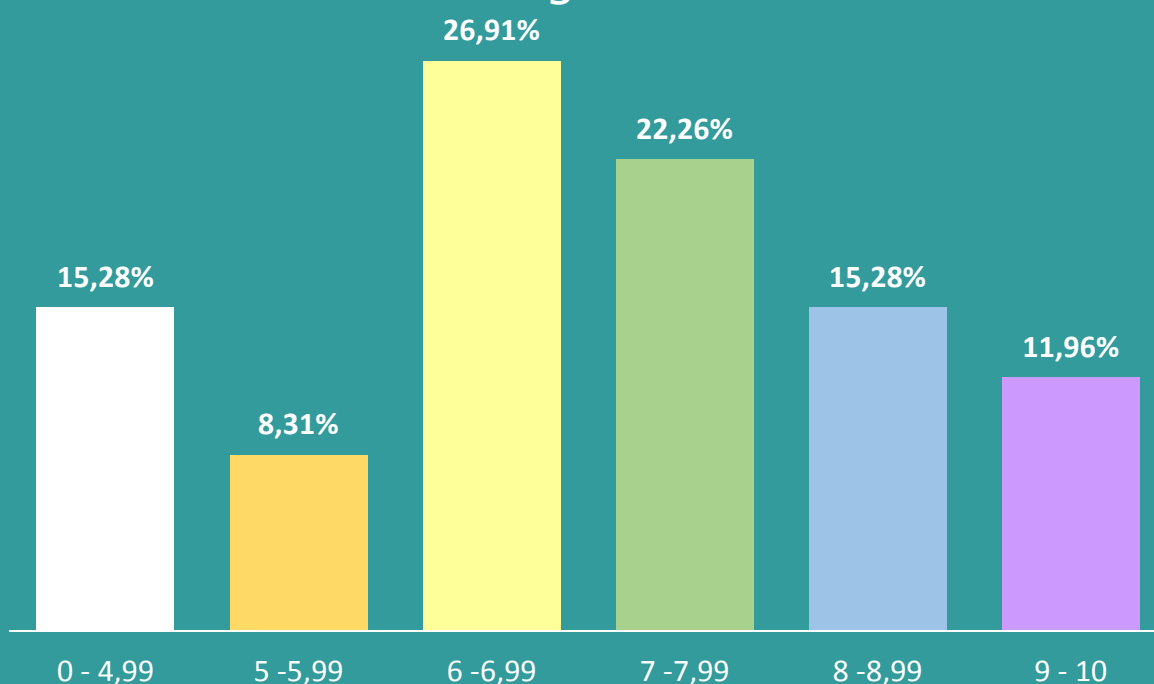
Pass: 84,72%



Pass in first call: 84,72 %



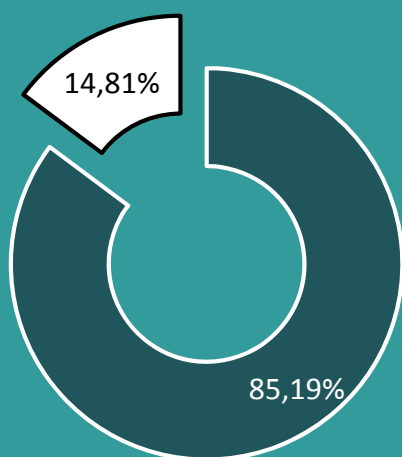
Grading Rates



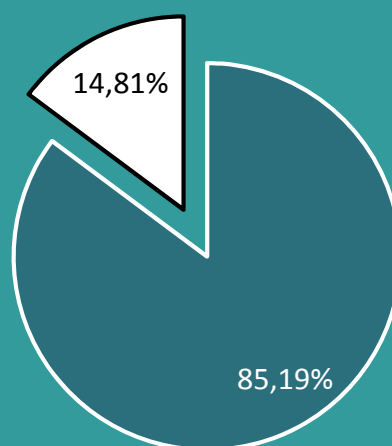
Data source: School of Architecture of Vallès Technical Office
Database PRISMA. Polytechnic University of Catalonia

Academic Student Results Spring Semester 2015-2016

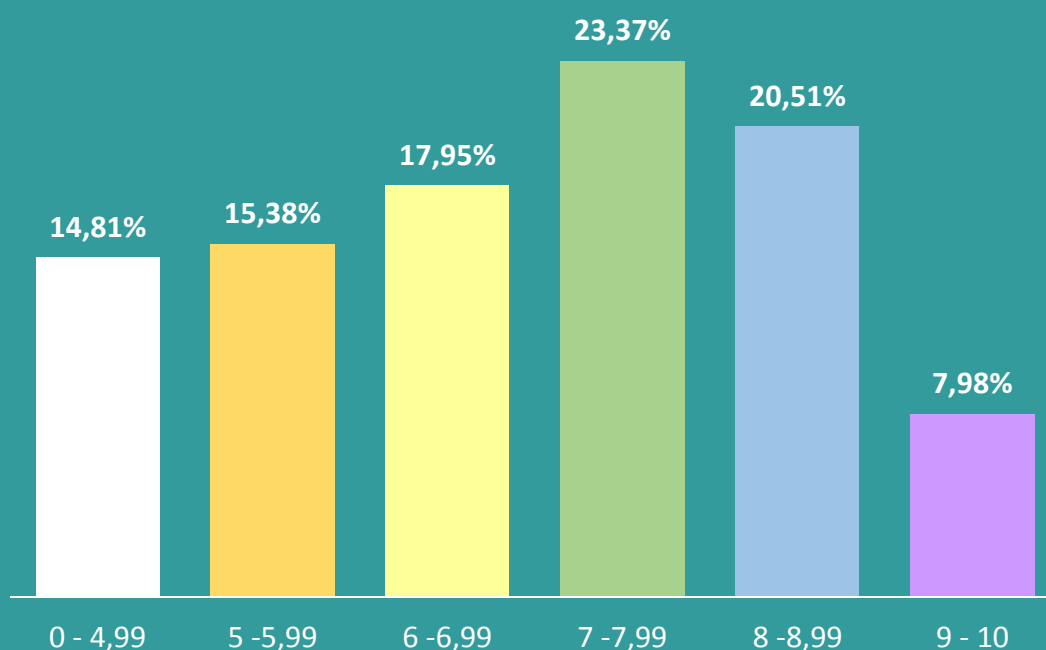
Pass: 85,19%



Pass in first call: 85,19 %



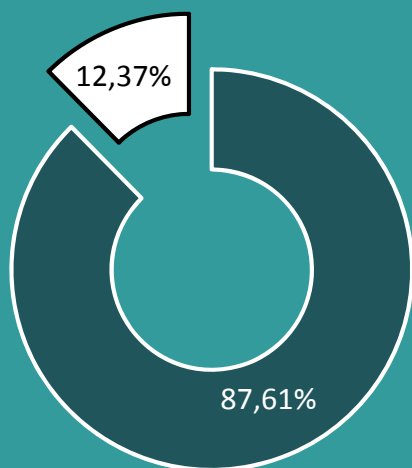
Grading Rates



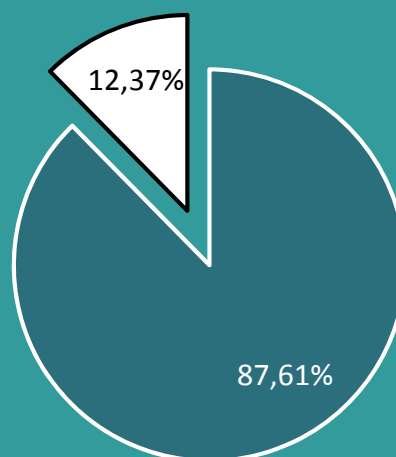
Data source: School of Architecture of Vallès Technical Office
Database PRISMA. Polytechnic University of Catalonia.

Academic Student Results Fall Semester 2015-2016

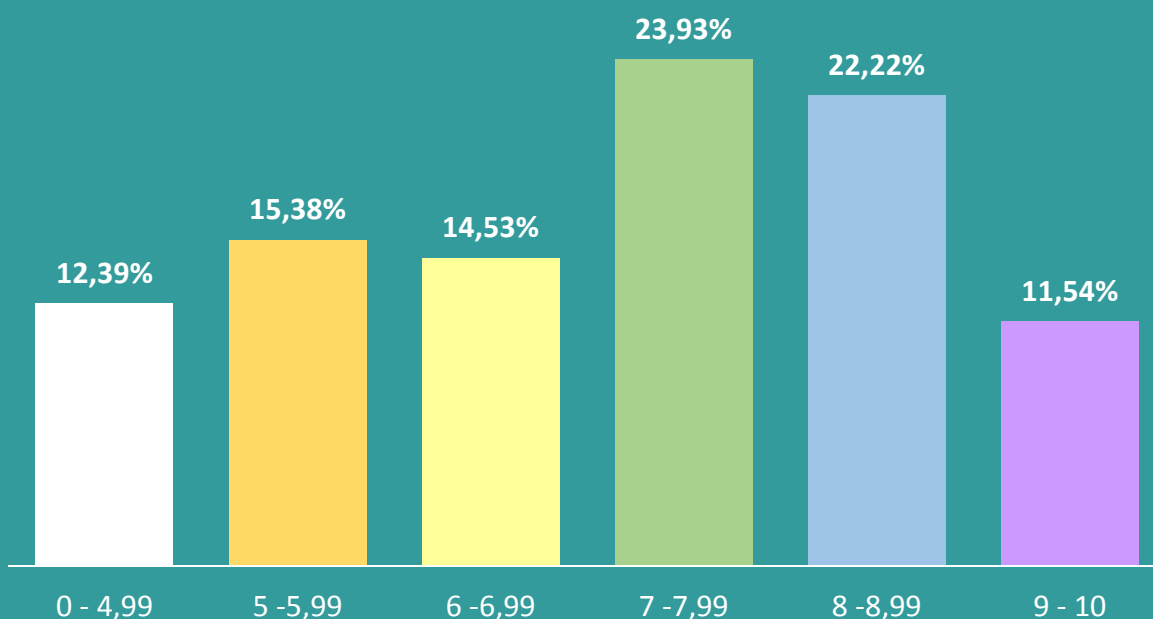
Pass: 87,61%



Pass in first call: 87,61 %



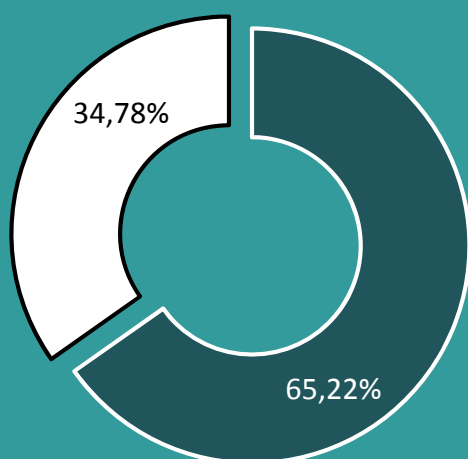
Grading Rates



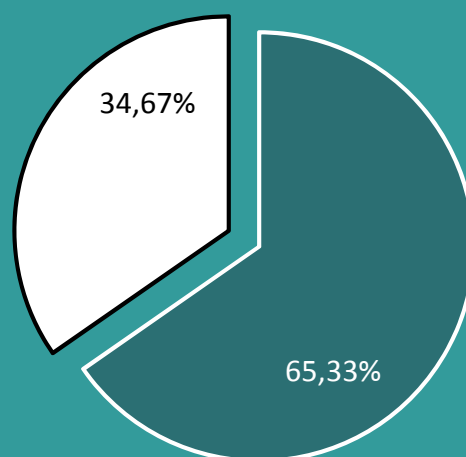
Data source: School of Architecture of Vallès Technical Office
Database PRISMA. Polytechnic University of Catalonia

Academic Student Results Spring Semester 2014-2015

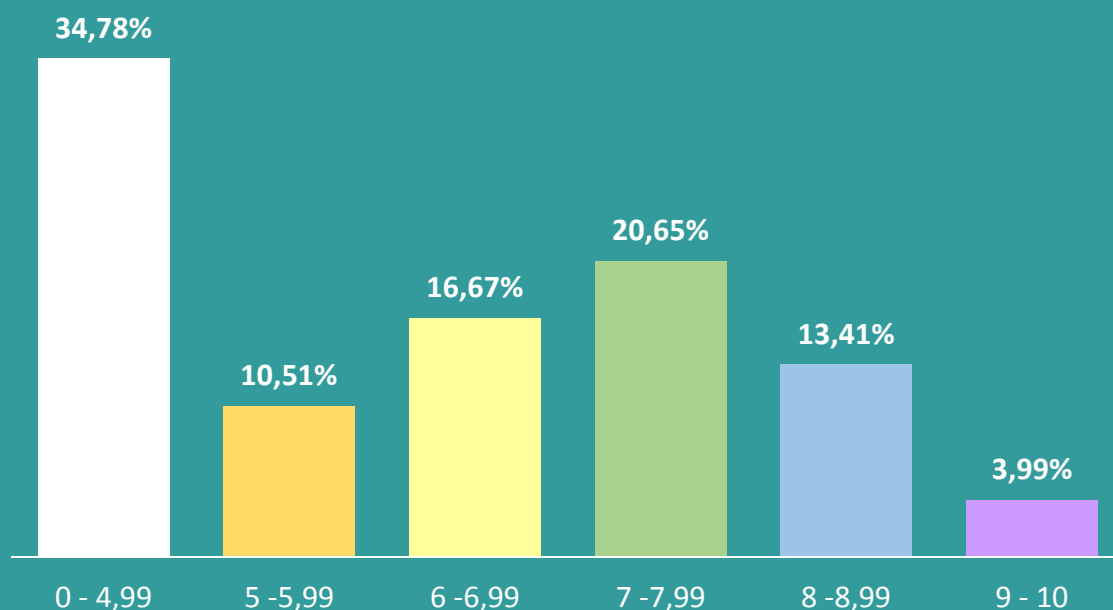
Pass: 65,22%



Pass in first call: 65,33%



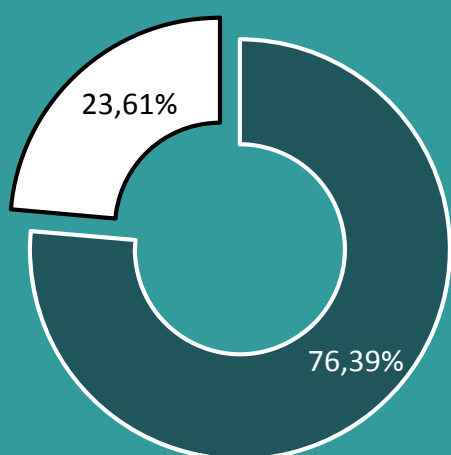
Grading Rates



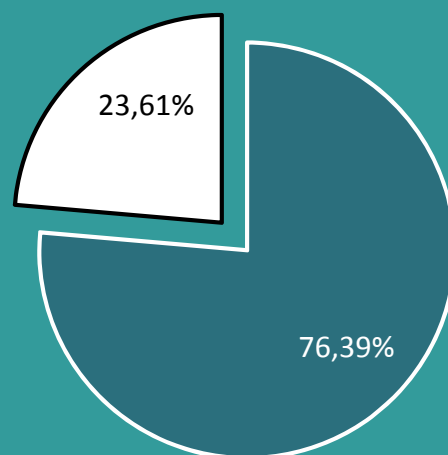
Data source: School of Architecture of Vallès Technical Office
Database PRISMA. Polytechnic University of Catalonia

Academic Student Results Fall Semester 2014-2015

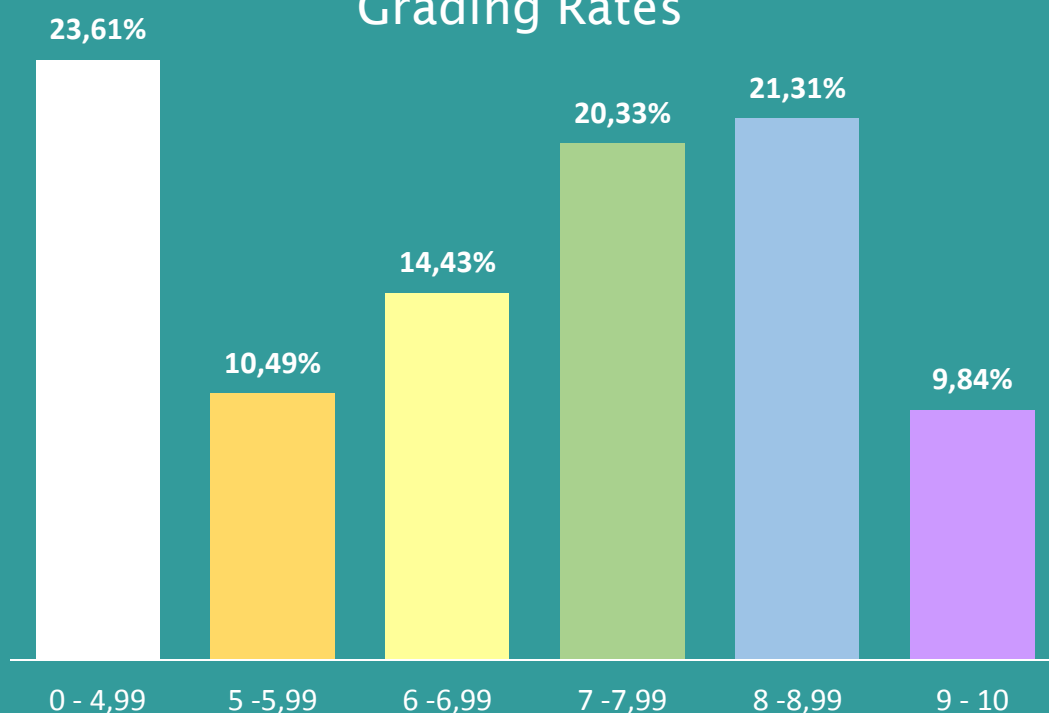
Pass: 76,39%



Pass in first call: 76,39 %



Grading Rates



Data source: School of Architecture of Vallès Technical Office
Database PRISMA. Polytechnic University of Catalonia